

Criminal Justice Gambling Help Service

OARS Community Transitions
Gambling Support Service
(GSS)

Friday 22nd September 2023





Acknowledgement of Country

OARS Community Transitions recognises that the land on which we meet, live, and learn has considerable natural and cultural heritage, including thousands of years of traditional ownership by Aboriginal people, and we pay respect to Elders past, present and emerging.

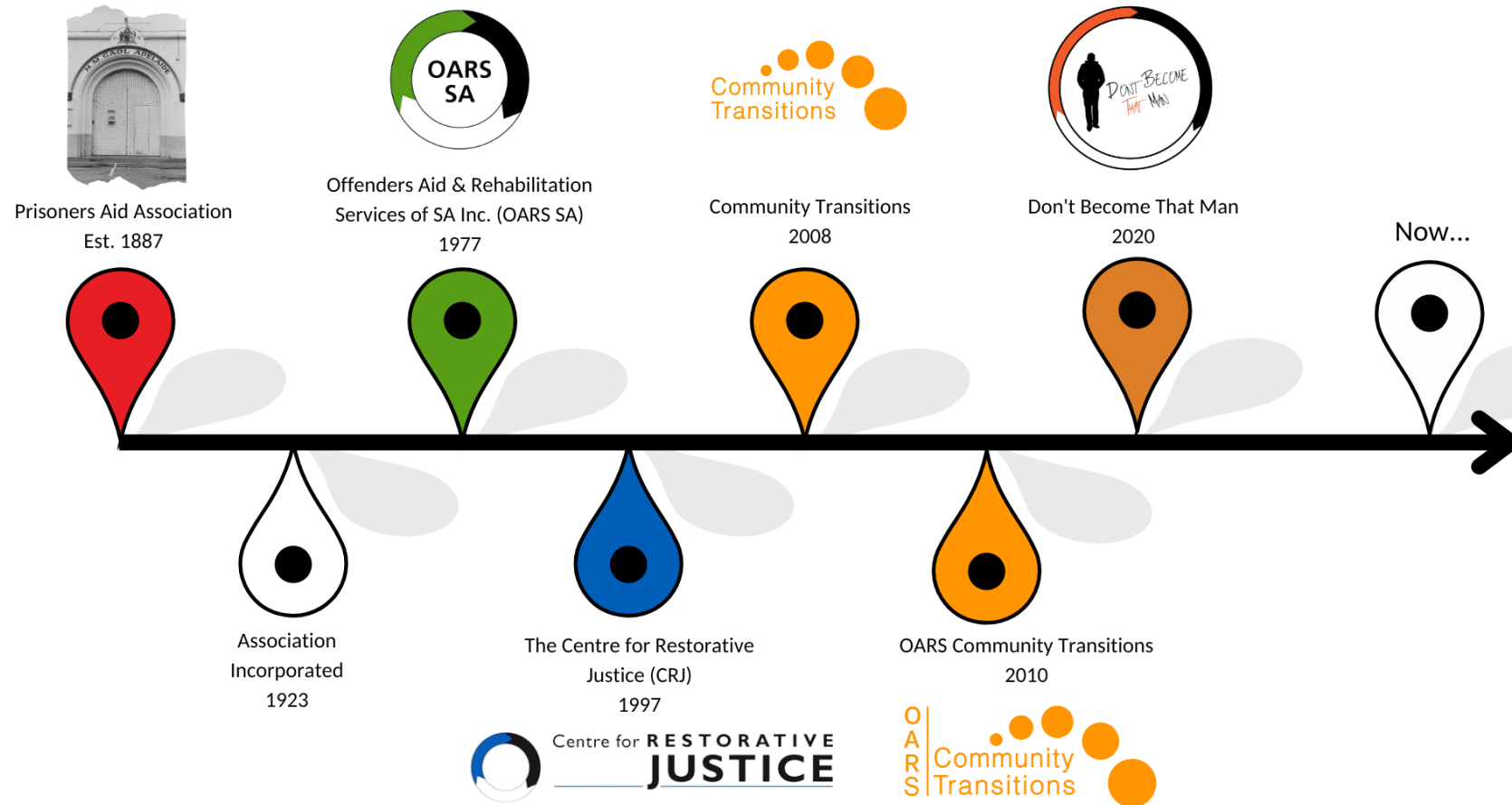


© Community Transitions 2023

This may not be copied, sold, or distributed without express permission of Community Transitions.

Statement of Purpose

Enhancing Community Wellbeing by Reducing Offending and Victimisation



OARS Community Transitions is a QIC & NSMHS quality accredited organisation and one of Australia's most innovative non-government crime prevention agencies.

OARS is also a registered / accredited NDIS provider, and White Ribbon Workplace

www.oars.org.au

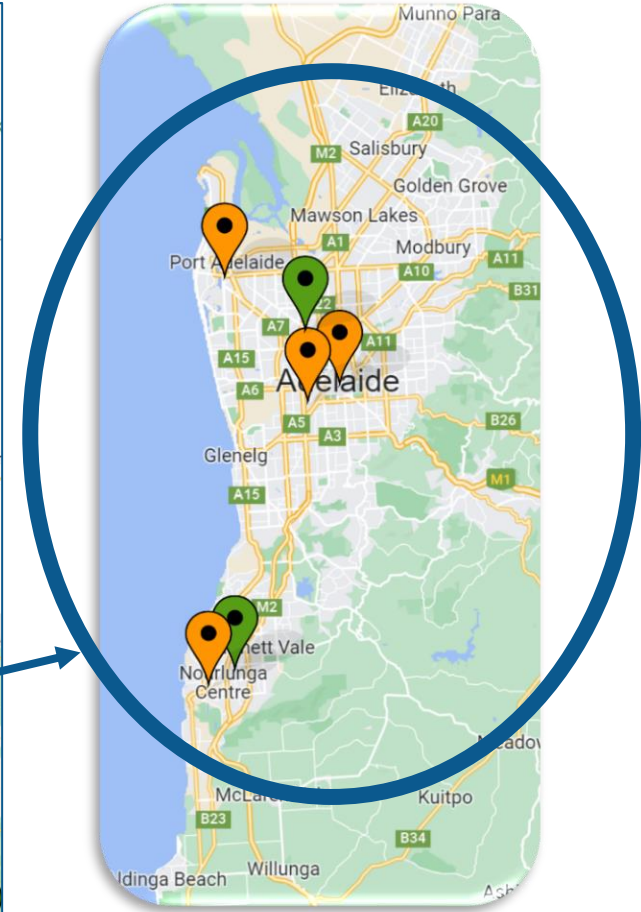
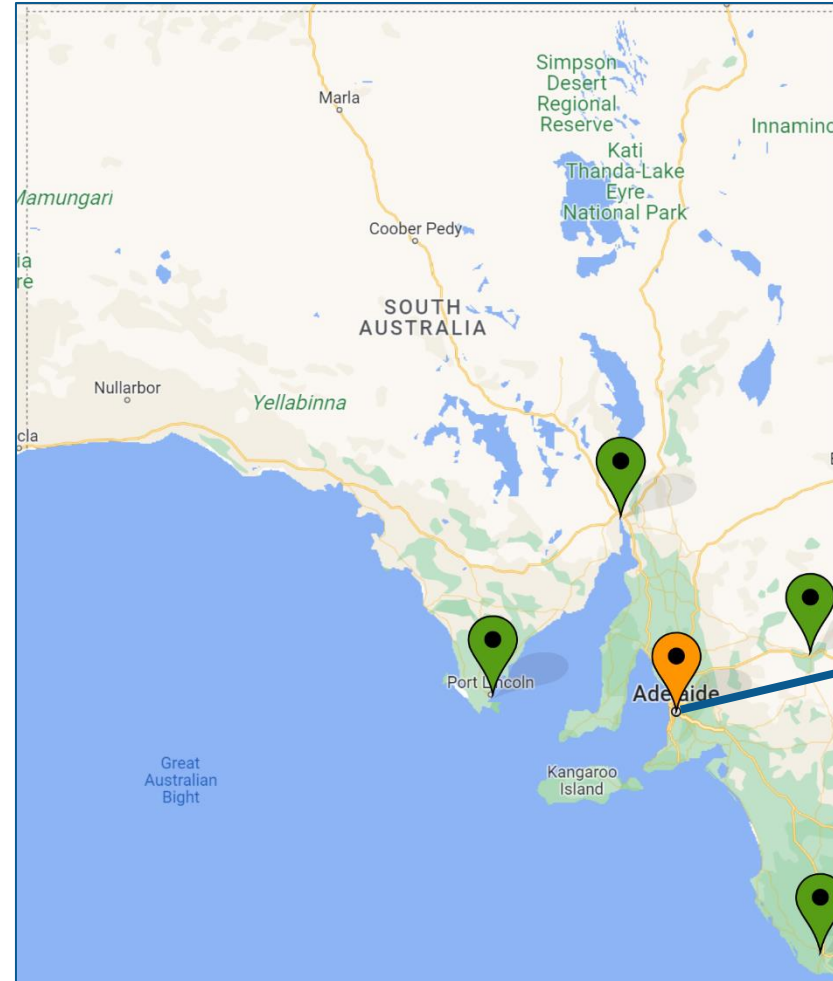
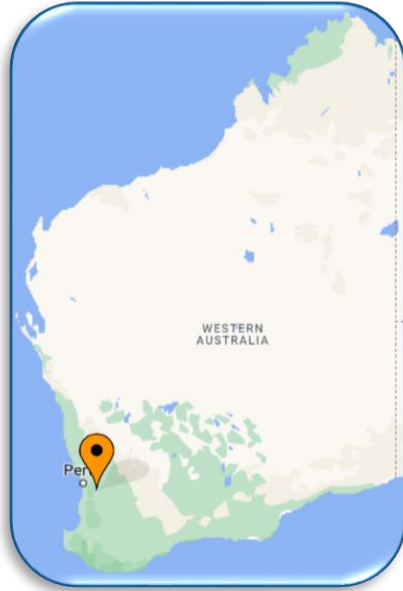


@communitytransitions



/oars-community-transitions





GSS History and Service Components

- Recognition of lack of gambling related support services within criminal justice system
- Founded July 2006
- Support options include:
 - ❖ 1:1 Counselling and Case Management
 - ❖ Relapse Prevention focused group programs
 - ❖ Comorbid focused interventions
 - ❖ Family Support
 - ❖ Court Support
 - ❖ Liaison with Lawyers/legal aid
 - ❖ Internal/external referrals as required



Where do our Referrals Come From?

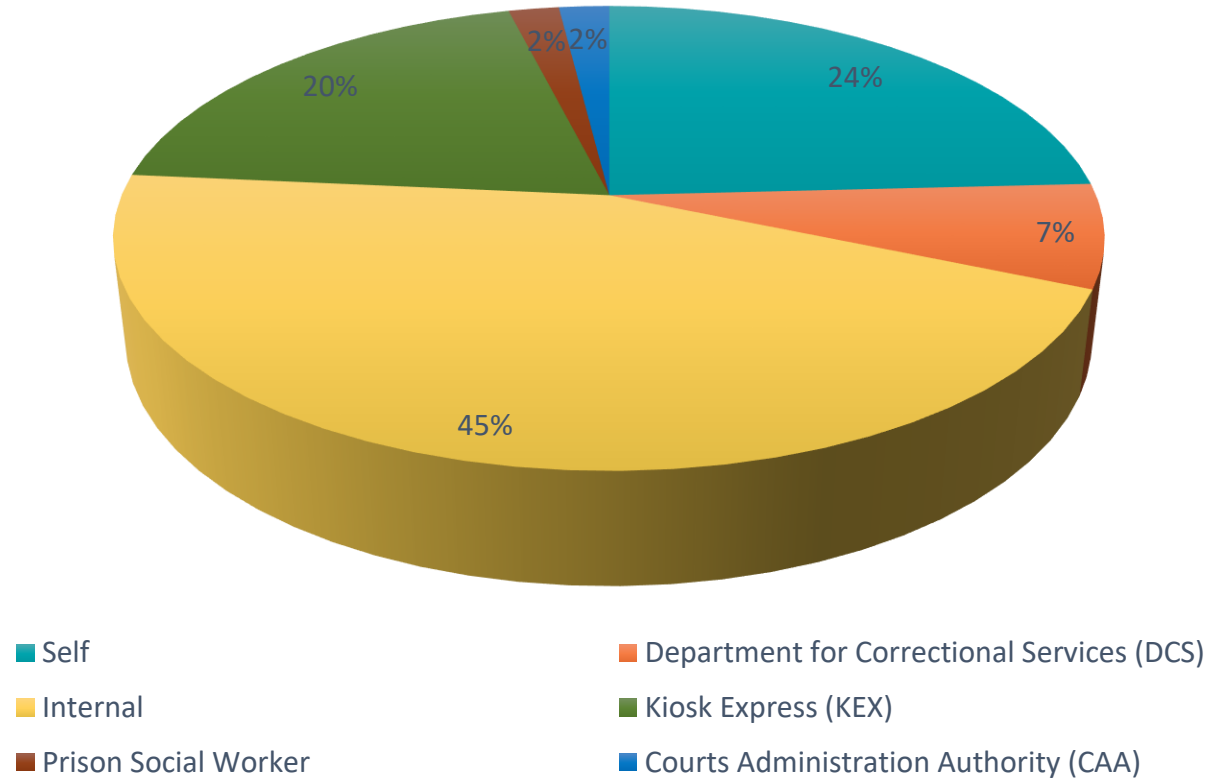


- ❖ Internal
- ❖ Self Referrals
- ❖ Prison KEX Referrals
- ❖ Department for Correctional Services
- ❖ Prison Social Worker
- ❖ Courts Administration Authority



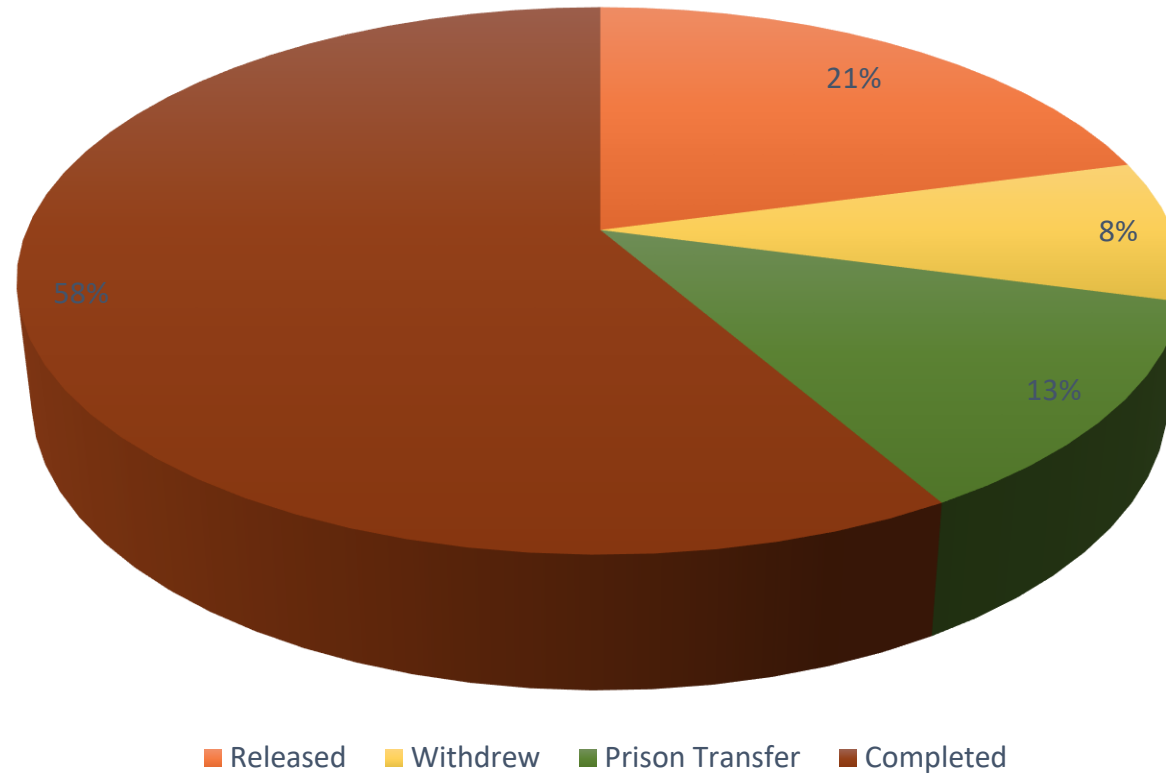
Referral Snapshot

Referrals January - August 2023



Relapse Prevention Groups January-August 2023

Group participation



Relapse Prevention Groups January- August 2023

Top 5 learning Outcomes at Completion

1. An increased knowledge and ability to set personal goals
2. Understanding of how thoughts and feelings relate to behaviours
3. Able to identify personal triggers and manage them more effectively
4. Increased confidence in ability to prevent lapse/relapse
5. Understanding of the importance of communication and enhanced skills



Feedback from participants

- ❖ *Knew what we were talking about*
- ❖ *Safe Space and Felt Comfortable*
- ❖ *Relatability*
- ❖ *Not judgmental, made me feel comfortable*
- ❖ *Looked forward to attending the group*
- ❖ *Learned a lot about myself*



Early Intervention/Prevention Strategies January- August 2023

Early intervention

is any activity that aims to identify and intervene in low risk gambling before it becomes more serious.

Early interventions are targeted towards gamblers showing early signs of harm and people able to intervene in risky gambling.



Prevention

is any activity that aims to stop harm from ever occurring and is often described as a primary intervention.

Prevention activities are directed towards everyone in a population..

77%

Early Intervention
Activities

570

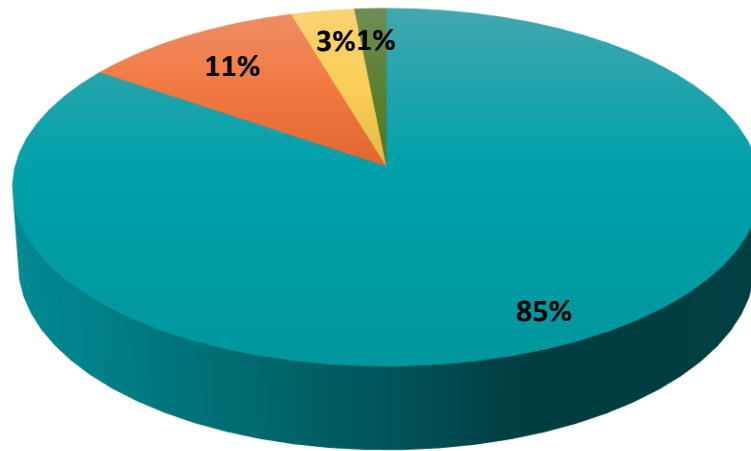
Participants
Reached

23%

Prevention
Activities

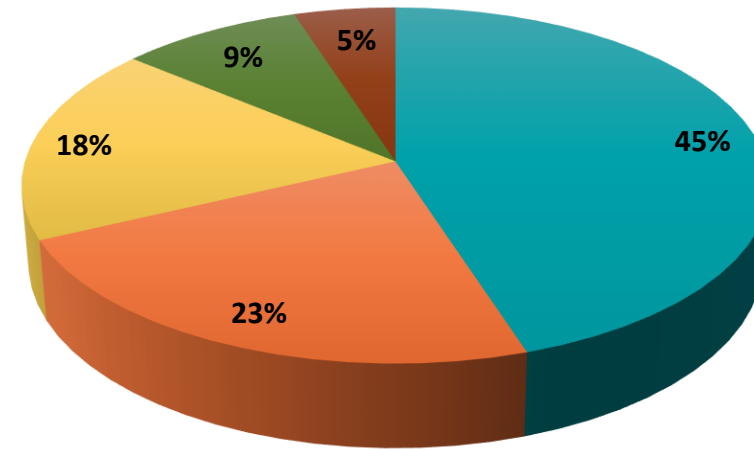
Early Intervention/Prevention Strategies January- August 2023

Primary Purpose of Activities



■ Service Promotion ■ Information
■ Awareness Raising ■ Education

Primary Target Audience of Activities



■ Allied Professionals
■ People Presenting to another Support Service
■ General Public
■ Community Sector Organisation or Group

Fine Enforcement Repayment Unit – Gambling Pilot

Approved Treatment Programs are able to support individuals in managing their fines.

These have historically focused on AOD focused programs.

In 2022 a 12 month pilot was established to include clients engaging with OARS Gambling Support Service.

\$126,065.82

fines reduced in the first 9 months of pilot

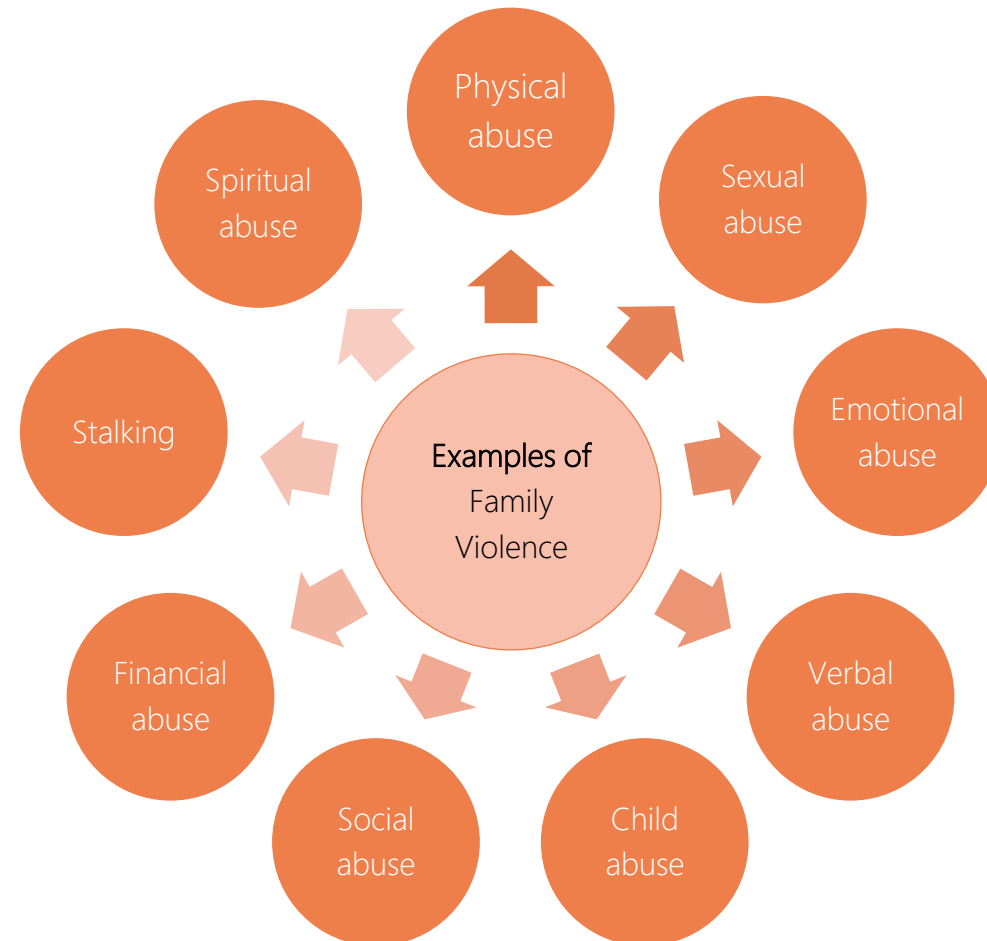
November 2022-
August 2023
30 applications have
been made to reduce
client debt with the
FERU.



Gambling & Family Violence

Family violence involves use of abuse, power and control. A range of harmful behaviours are used in family violence, which cause individuals, families and communities to suffer. Children and young people who have experienced family violence are highly likely to struggle with negative educational, social, emotional, health and well-being outcomes, even if they do not directly see or hear the abuse

Each week in Australia, more than one woman is killed by their partner or ex-partner, and research has shown that coercive and controlling behavior has been present in almost all of these relationships.



CONTACT DETAILS

Contact Details:
(08) 8249 0700



@communitytransitions



/oars-community-transitions



www.oars.org.au



www.restorativejustice.com.au



www.dontbecomethatman.org.au

Tricia Oats | General Manager Client Treatment Services
toats@communitytransitions.com.au



Questions?